

Twos R Us

Short Shift Kit Installation instructions

Disclaimer: This is a relatively simple install that requires basic tools and limited mechanical know-how. If you do not feel comfortable installing these items after reading the instructions, DO NOT ATTEMPT THE INSTALLATION. Improperly installed shifter components can lead to transmission damage and could potentially lead to an accident.

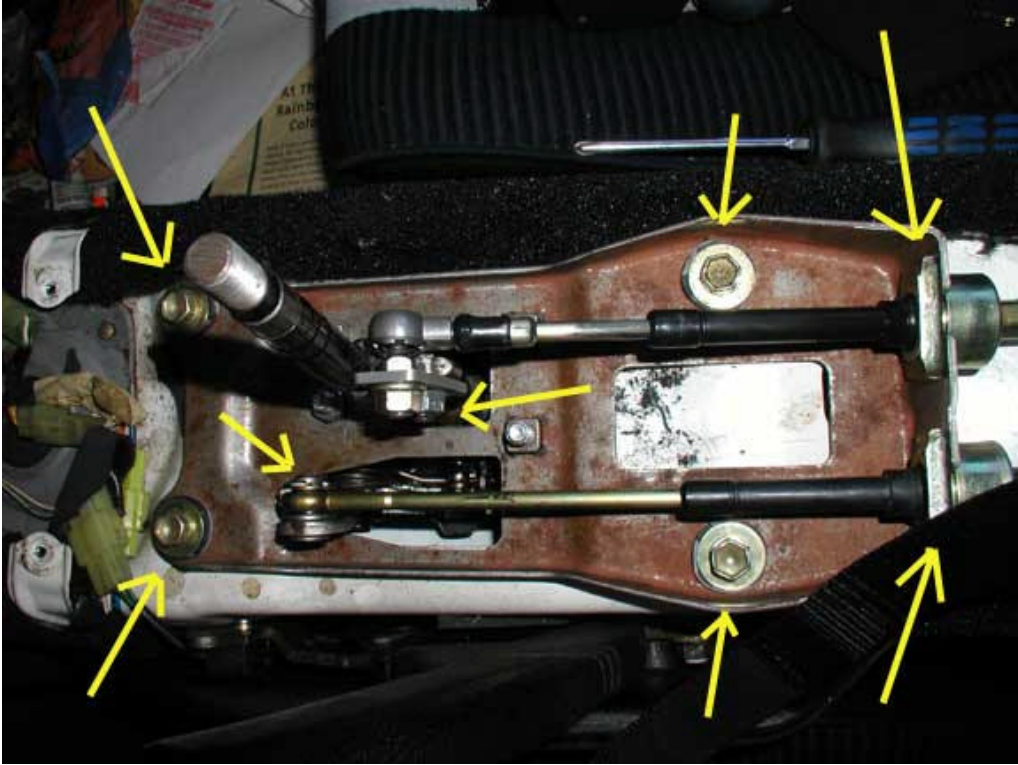
Tools required: Straight blade screwdriver; 10mm, 12mm and 13mm wrenches or sockets; Pliers.

You should have the following items: 1 shift lever, 3 bolts with washers, 1 Delrin RSe drop plate.

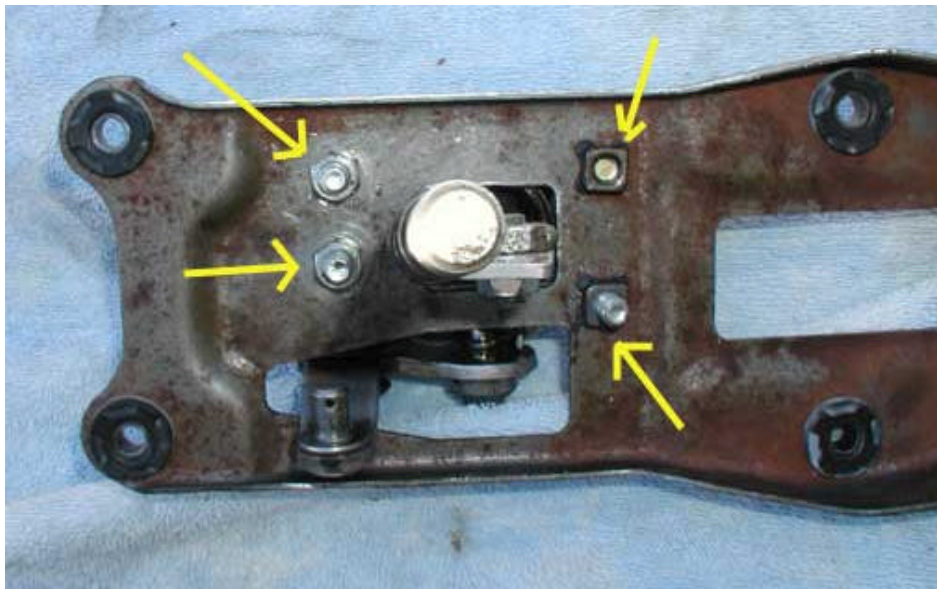


1. Remove the console from the vehicle. Removal is different for the MKI and MKII, but is limited to the removal of some trim pieces and Phillips head screws. Detailed instructions for console removal are not included with this kit.
2. Remove the shifter assembly from the vehicle by removing
 - a. Two large clips holding the cables to the rear of the assembly. Pry these up with a straight blade screwdriver and put them aside.
 - b. Shifter cables from the linkage. The side-side cable is held in place with a cotter pin. Remove the pin and washer and put them aside. Remove the cable from the shifter. The front-back cable is held in place with a 12mm nut. Remove the nut and set it aside. Pull the cable stud out of the tab on the lever and move the cable aside.
 - c. 4 12mm bolts holding the assembly to the frame of the vehicle.

(See diagram below)



3. With the shifter assembly removed from the vehicle, disassemble it by removing the 4 12mm bolts. Retain one of these bolts and the two nuts.

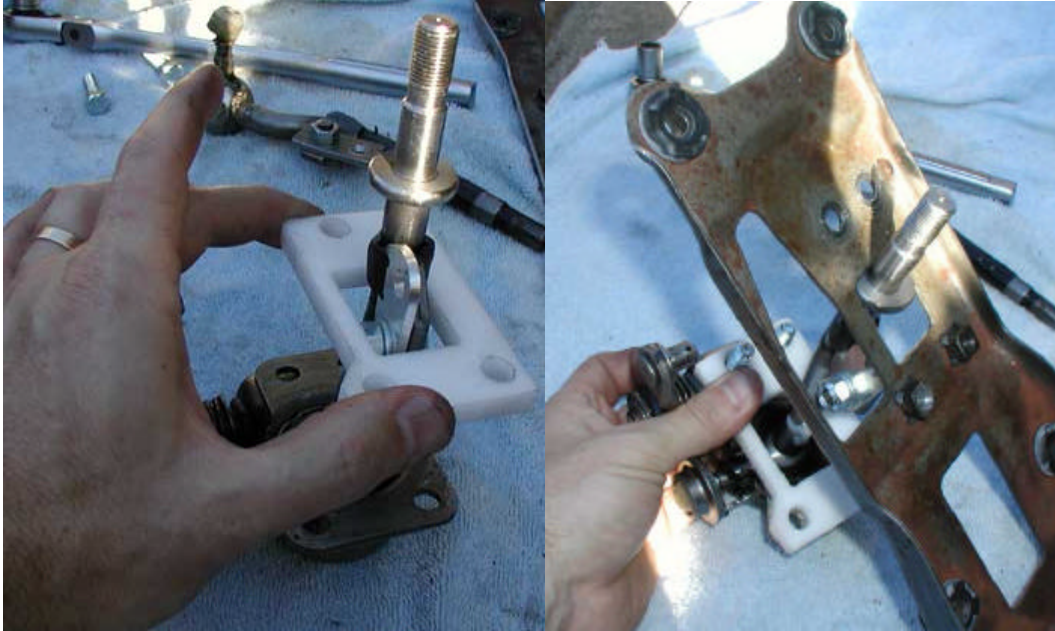


4. Note the position of the lower shift lever pivot with regards to the neutral return spring before removing the lever from the shifter.

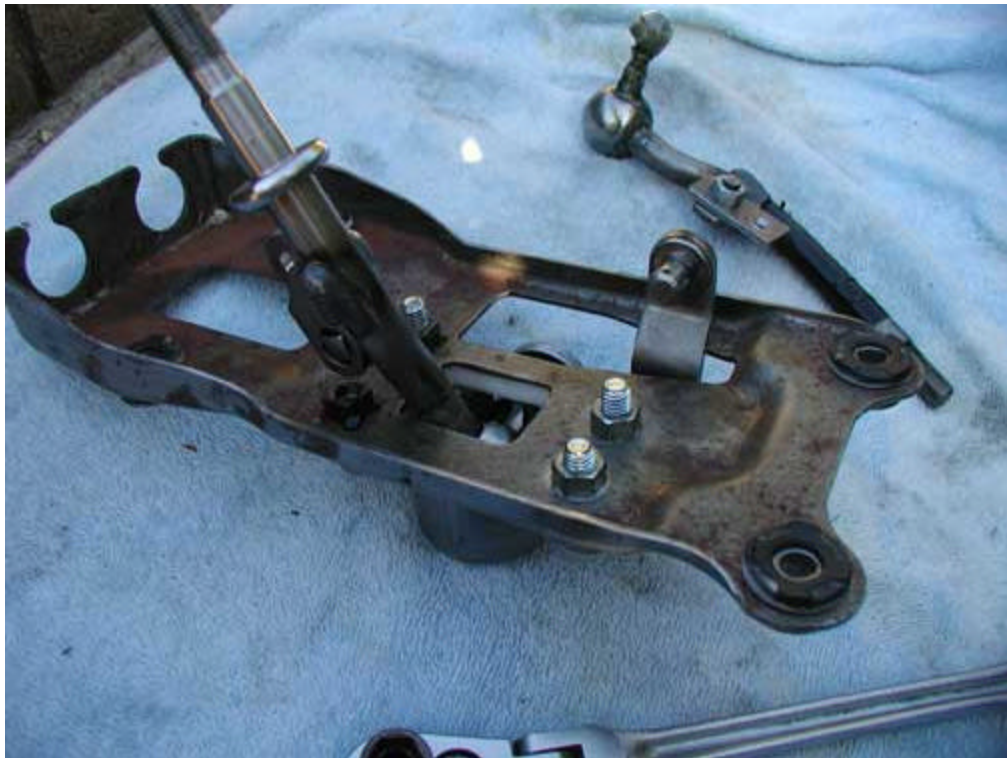


5. Remove the lever by pulling it up and twisting the lower arm free of the neutral return spring.
6. Once the lever is out, remove the spring clip from the top of the plastic cup and pop the lever out of the cup. Replace the lever with the one included with your kit. You may want to coat the lever ball with some multi purpose grease, although the grease remaining from the factory is usually sufficient. Replace the spring clip onto the plastic cup and replace the lever into the assembly – again ensuring that the lower pivot has the proper position with regards to the neutral return spring.

7. Install the RSe plate over the shifter and hold it in place by inserting the two forward bolts (use two of the longer bolts included with your kit).



8. Install the lever assembly using the three longer bolts and one of the original bolts. The short bolt goes in the rear, right side hole.



Installation in the car is the reverse of removal.

